

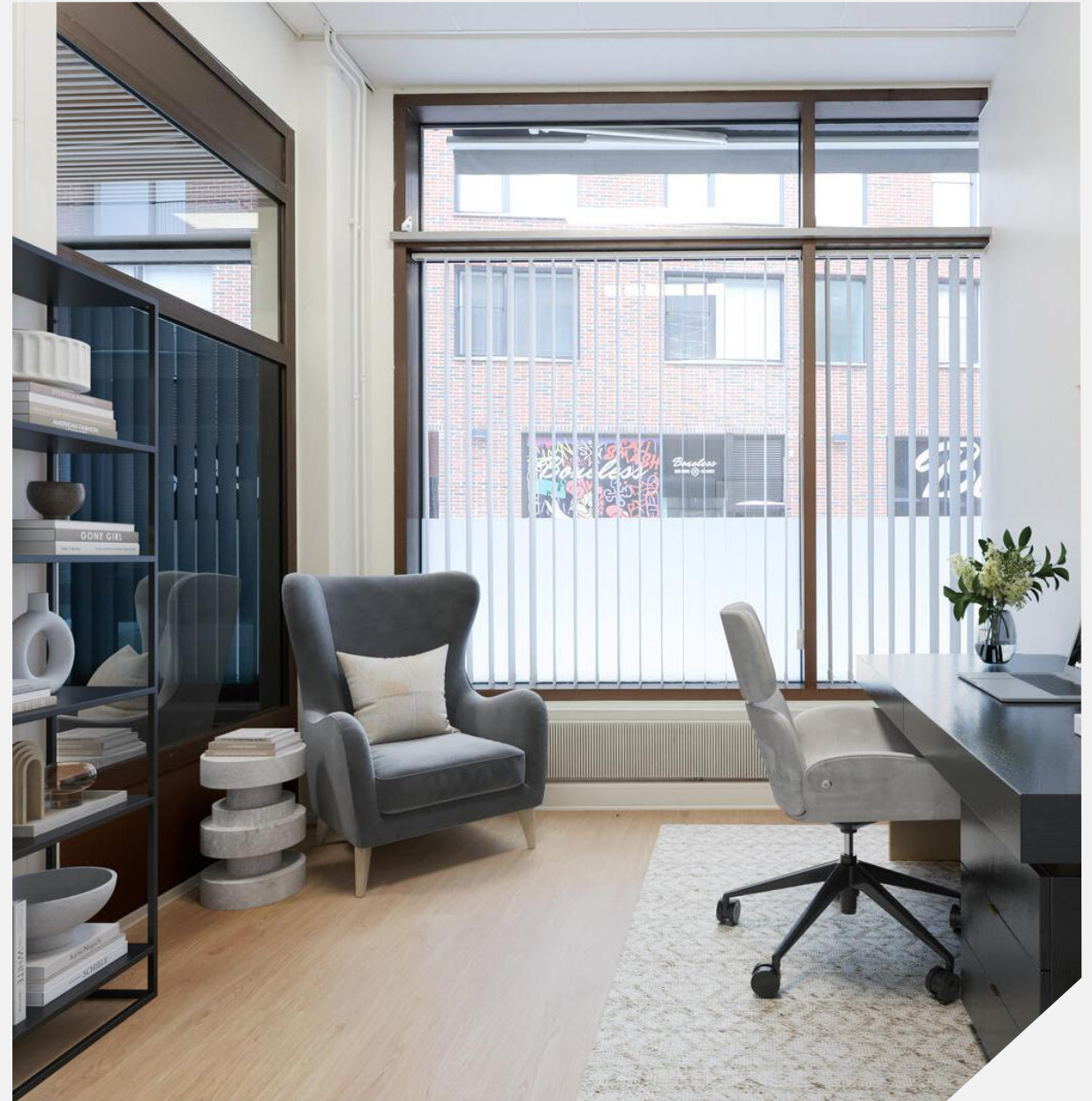


Kauppakeskus Tikkuri
Asematie 4-10, 01300 Vantaa

Loistava sijainti

Vuokralle tarjolla Vehkapolun varrelta oleva katutasoinen 121 m² toimisto omalla sisäänkäynnillä. Toimisto sijaitsee Kauppakeskus Tikkurin kiinteistössä.

Kauppakeskus Tikkuri sijaitsee Tikkurilassa, Vantaan nopeasti kehittyvässä keskustassa. Hyvä sijainti Tikkurilan juna- ja linja-autoaseman vieressä. Kauppakeskus Tikkuri tarjoaa hyvät lounasmahdollisuudet sekä monia erikoisliikkeitä. Tikkurissa on hyvät pysäköintitilat hallissa.





Area analysis

Asematie 4-10, 01300 Vantaa

Location summary

Asematie 4, 01300 Vantaa: Centrally Located for Commuters

This location offers excellent transport links, with the train station providing direct access to Helsinki and the airport. Residents benefit from nearby shops, restaurants, and essential services. Several parks and green spaces offer recreational opportunities. The area presents a blend of residential and commercial activity, creating a lively and convenient environment for urban living.



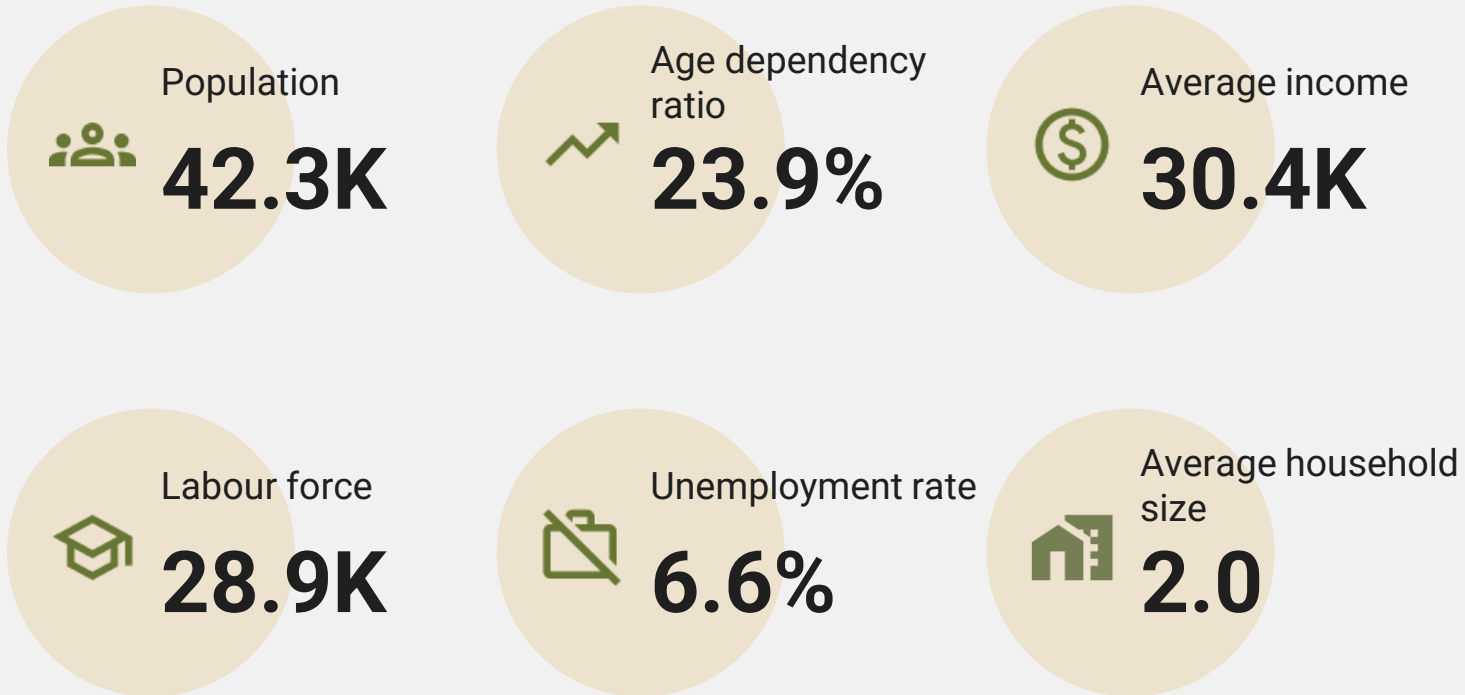
Population structure

Demographic Snapshot: 2 km Radius Around Asematie 4, Vantaa

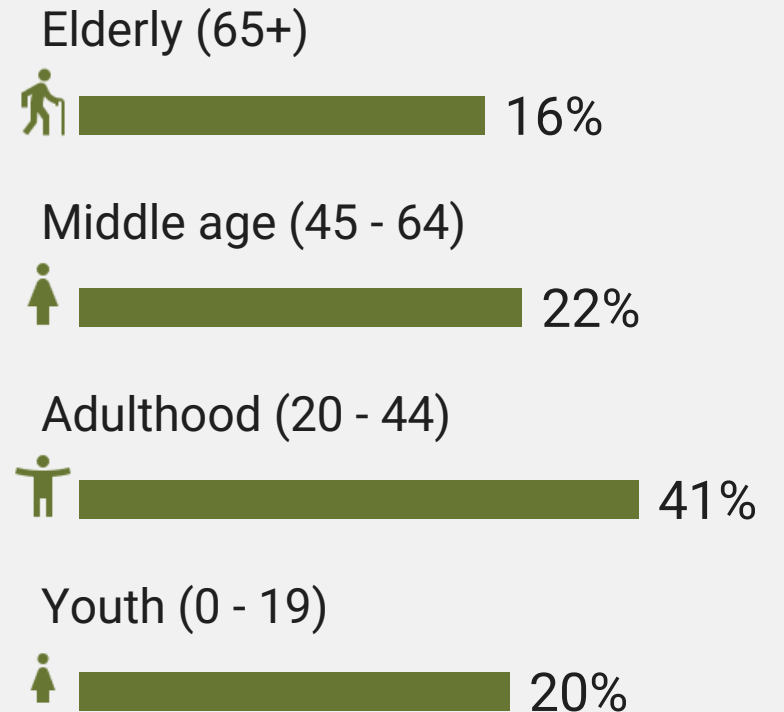
This 2 km radius area exhibits a diverse age distribution. Young adults (20-29 years) constitute a significant portion of the population (6440), followed closely by those in their early thirties (30-34 years) (4194). Families with children are well-represented, with a combined child population (0-12 years) of 5498. Middle-aged individuals (40-59 years) also form a notable group (9986). Finally, the senior population (65+ years) is substantial (6858). This blend of age groups indicates a community that likely supports diverse needs, from schools and family services to healthcare and senior living facilities.



Population



Age groups



Services

Asematie 4, 01300 Vantaa: Services Overview

Asematie 4 in Vantaa benefits from a comprehensive selection of everyday services designed to facilitate convenient living. Residents have access to various supermarkets, restaurants, and coffee places that cater to diverse needs and preferences. The area is well-served by public transportation, including numerous bus stops and a train station, ensuring easy connectivity. Families will find ample childcare options with several daycares and schools in the vicinity. The availability of these services contributes to the areas practicality and supports the daily routines of its residents.



Services within a 15-minute walk

Public transport

Bus stop

Tram stop

Train stop

Metro stop

Education

Day care

Schools

Retail

Restaurants

Cafe

Supermarkets

62

-

1

-

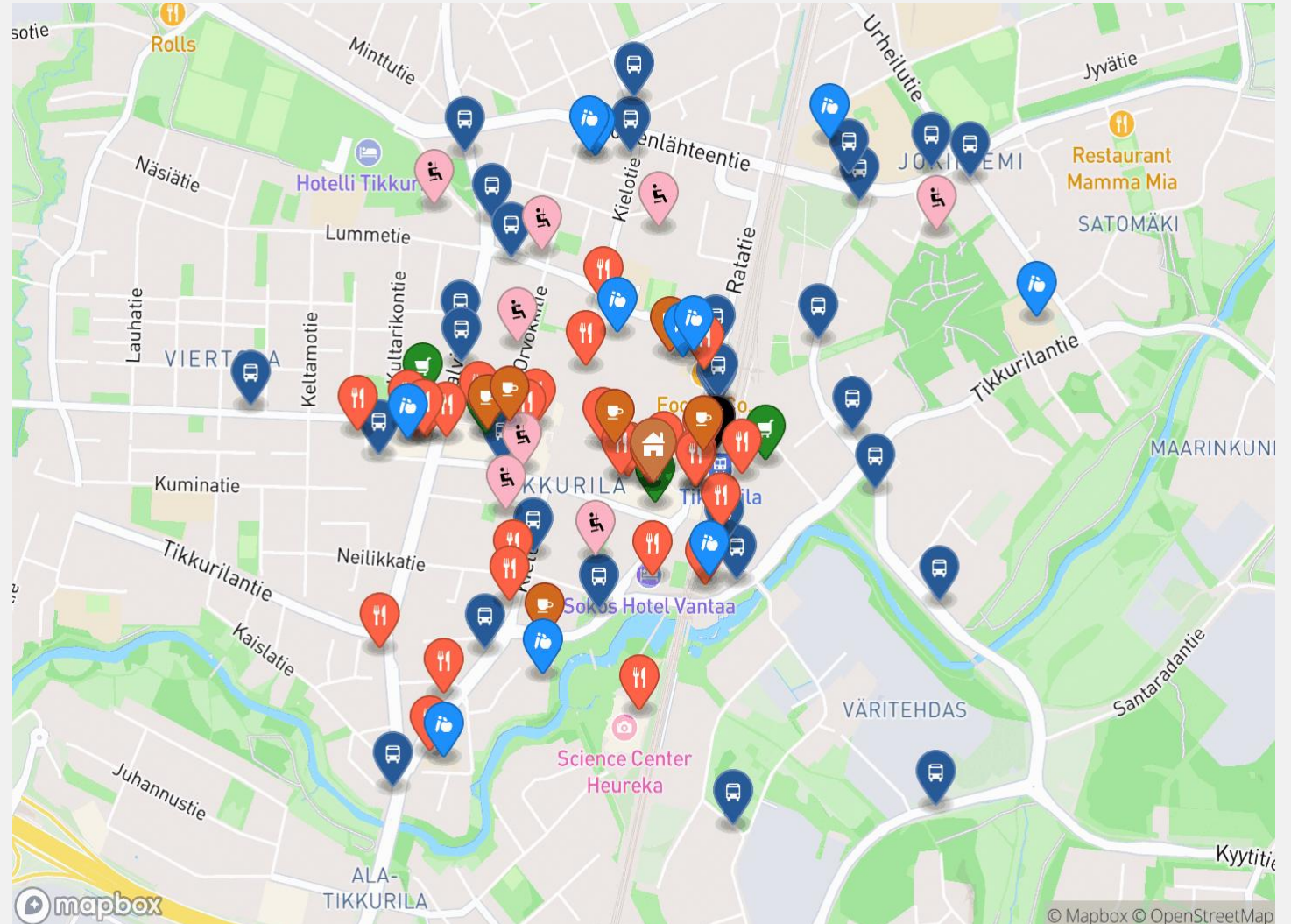
8

11

60

7

4



INNA

A large, stylized graphic on the right side of the image. It consists of a dark blue circular outline that is partially cut off on the right. Inside this circle, there are several overlapping, angular shapes in a lighter blue color, resembling a stylized letter 'A' or a similar geometric form. The overall aesthetic is modern and tech-oriented.